

# Yardley® Zap-Sert® Double Ended Inserts

## For Ultrasonic, Thermal or Molded-In Installation in Plastics and Thermoplastics

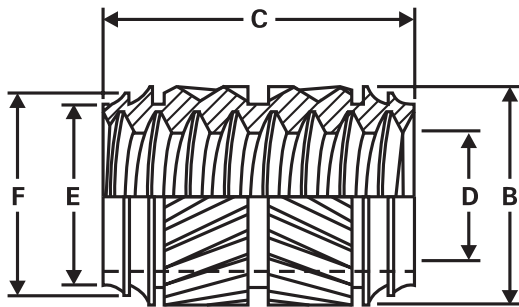


### Advantages

- Unique radial barbs provide strong resistance to pull-out
- Offers high resistance to rotation
- Lead on both ends simplifies installation
- Ideal for automated, high volume production

### Available from stock in Brass

Custom sizes/materials available



ZAP-SERT Double Ended Inserts offer plastic molders and users impressive benefits in lower cost production and better quality assemblies. These inserts give the strength of molded-in inserts and the economy of inserts that are put in after molding. For ease of installation, ZAP-SERT Inserts have a lead on both ends which also makes them ideal for high volume, automated production.

### DOUBLE ENDED INSERTS

U.S. Part Number	Metric Part Number	A U.S. Thread Size	A Metric Thread Size	B Diameter Over Knurl	C Length +.000 -.010	D U.S. I.D. Tolerance +.0015 -.0000 After Tapping	D Metric I.D. (Inches) Tolerance +.0015 -.0000 After Tapping	E Lead Diameter +/- .003	F +/- .003	Starting Hole Size
440Z5-7	3005Z5-7	4-40	M3.0 x 0.5	.172	.226	.089	.100	.131	.152	.136
632Z6-9	3506Z6-9	6-32	M3.5 x 0.6	.205	.281	.110	.117	.166	.184	.171
832Z7-10	4007Z7-10	8-32	M4.0 x 0.7	.232	.323	.136	.133	.210	.219	.216
1024Z8-12		10-24		.269	.375	.154		.222	.248	.228
1032Z8-12	5008Z8-12	10-32	M5.0 x 0.8	.269	.375	.161	.168	.222	.248	.228
25020Z12-16	6010Z12-16	1/4-20	M6.0 x 1.0	.332	.500	.204*	.200*	.291	.311	.296
31218Z13-16	80125Z13-16	5/16-18	M8.0 x 1.25	.394	.500	.261**	.267**	.354	.374	.359

Tolerances: \*+.002 -.000 after tapping \*\*Check with our engineering department for tolerances



10 West College Avenue · P.O. Box 357 · Yardley, Pennsylvania 19067-8357  
**Toll Free: 1-800-457-0154 · Phone: 215-493-2723 · Fax: 215-493-6796**  
 Internet: [www.yardleyproducts.com](http://www.yardleyproducts.com) · E-mail: [info@yardleyproducts.com](mailto:info@yardleyproducts.com)